

Filiforms, Followers & Sounds



Products designed
for specialized
urological procedures





Designed for Specialized Urological Procedures

BARD® offers a full complement of urological instruments to calibrate and dilate the urethra. The BARD® HEYMAN™ slipover system offers a unique approach to passage through and dilation of urethral obstructions. Bard also offers the urologist a wide range of surgical stainless steel sounds.

Heyman™ Filiforms & Followers



HEYMAN™ Filiform Catheter, Olive Tip



HEYMAN™ Filiform Catheter, Spiral Tip

HEYMAN™ Filiforms - Manufactured from radiopaque polyurethane with a stainless steel wire stylet.



HEYMAN™ Follower, Coude Tip



HEYMAN™ Follower, Straight Tip

HEYMAN™ Followers - Made of a special formula pliable plastic. Available with Straight Tip or Coude Tip.

Woven Filiforms & Followers



Woven Filiform, Straight Tip



Woven Filiform, Spiral Tip



Woven Filiform, Coude Tip



Woven Phillips Follower



Woven Phillips Follower, Urethral Bougie

Woven Filiforms & Followers - Woven material softens in the body, allowing filiform tips to curl in the bladder while urethra is being dilated.

Sounds



Walther Female Dilator Catheter, Curved Tapered Tip Meatal Dilator



LeFort Metal Sound, Threaded Tip



Metal Female Sound (McCrea)



Goodwin Sounds



Metal Sound, Adult Male Length, Prostatic Curve

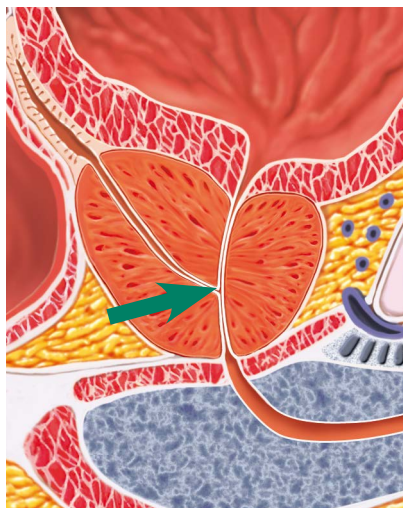
Specialized Sounds - BARD® offers sounds to compliment BARD® woven filiforms, the HEYMAN™ System and to meet other physicians needs.

HEYMAN™ System Urologist Tray

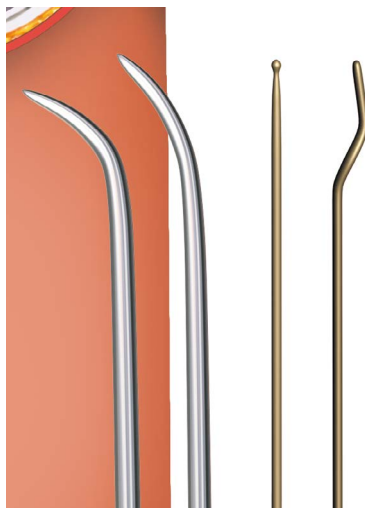


The HEYMAN™ System Urologist's Tray contains all components needed for the dilation and catheterization of the obstructed urethra, conveniently arranged sequentially in a sterile tray.

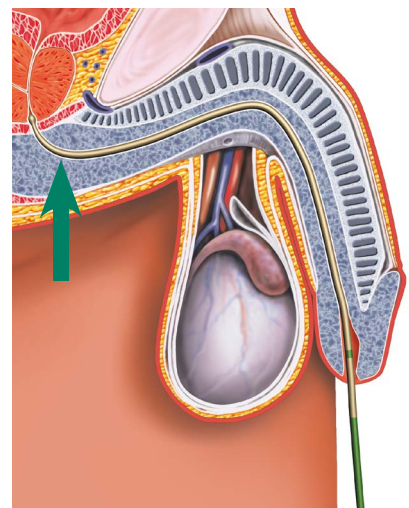
Surgical Technique



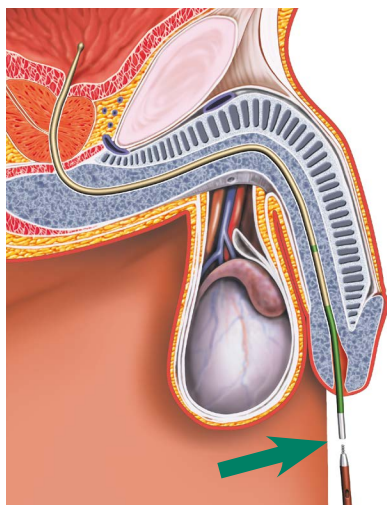
1. Prostatic strictures require dilation.



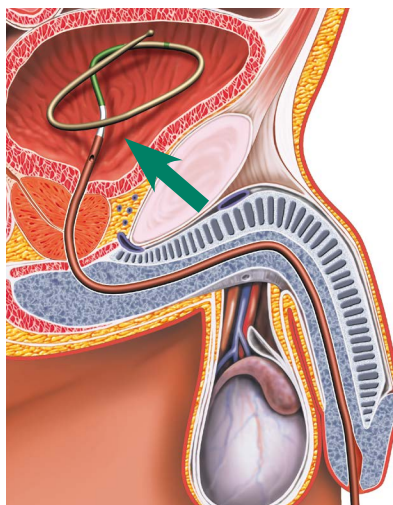
2. The appropriate instrument is determined.



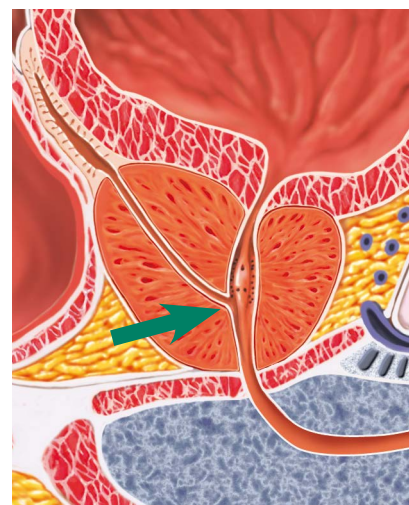
3. The filiform is inserted into the urethra and navigates through a stricture.



4. Once the filiform is through the urethra, a follower is attached to allow for increased dilation.



5. The larger diameter follower dilates the urethra while the filiform coils in the bladder.



6. Once the filiform and follower are removed, the bladder is accessible through the dilated urethra.

Filiforms, Followers & Sounds

Products Designed for Specialized Urological Procedures

Ordering Information				
Order Number	Product	Tip	Fr. Size	Length
136904	BARD® HEYMAN™ Filiform Catheter	Olive	4	
137904	BARD® HEYMAN™ Filiform Catheter	Spiral	4	
0211XX	BARD® HEYMAN™ Follower	Straight	10 - 24	
0213XX	BARD® HEYMAN™ Follower	Coude	10 - 24	
0218XX	Woven Filiform	Straight	3 - 6	18"
0219XX	Woven Filiform	Straight	2 - 6	12.5"
0220XX	Woven Filiform	Spiral	4 - 6	18"
0221XX	Woven Filiform	Spiral	2 - 6	12.5"
0222XX	Woven Filiform	Coude	4 - 6	18"
0223XX	Woven Filiform	Coude	3 - 6	12.5"
0215XX	Woven Phillips Follower		8 - 24	13.5"
0240XX	Woven Phillips Follower	Urethral Bougie	8 - 24	13.5"
0426XX	BARD® LeFort Metal Sound	Threaded	10 - 30	
0428XX	BARD® Goodwin Sound		12 - 30	
0439XX	BARD® Walther Female Dilator - Catheter (Stainless Steel)		12 - 38	
6042XX	BARD® Metal (McCrea Model) Female Sound Infant thru Adult		8 - 36	
6049XX	BARD® Metal Sound, Adult Male Length w/ Prostatic Curve (Stainless Steel)		12 - 28	
123400	HEYMAN™ System Urologist Tray			

*Can be purchased as a complete set

For additional information contact your local Bard representative or call 1.800.526.4455.

Indications for use: For passage through and dilation of urethral obstructions

WARNING: Because the filiform catheter may advance with the passage of the followers or sounds, a length of the filiform catheter should always appear beyond the proximal end of the urethral instrument, otherwise the filiform catheter may be left in the urethra with the instrument is withdrawn.

Caution:

- The Bard Council catheter contains natural rubber latex which may cause allergic reactions.
- Federal (USA) law restricts this device to sale by or on the order of a physician.

Please consult product labels and inserts for any indications, contraindications, hazards, warnings, cautions and directions for use.

DILATION PRODUCTS

BARD | MEDICAL

C. R. Bard, Inc.
Covington, GA 30014
800.526.4455
www.bardmedical.com

Bard, Advancing the Delivery of Healthcare and Heyman are trademarks and/or registered trademarks of C. R. Bard, Inc.
©2017 C. R. Bard, Inc. All Rights Reserved. Printed in U.S.A.
1610-16 BMD/DILA/0217/0017

