



Step 1

Peel off seat upholstery from mesh seat support



Step 2

Remove bolts, located on the front of the seat frame in which the telescoping seat depth extension tubes are inserted. Perform on one side at a time. (5/32" Hex Key and 7/16" wrench)



Step 3a

Remove bolt and pull side frame apart from seat frame, ensure all loose part are in correct sequence before reinserting bolts.



Step 3b

See diagram on back page for part sequence.



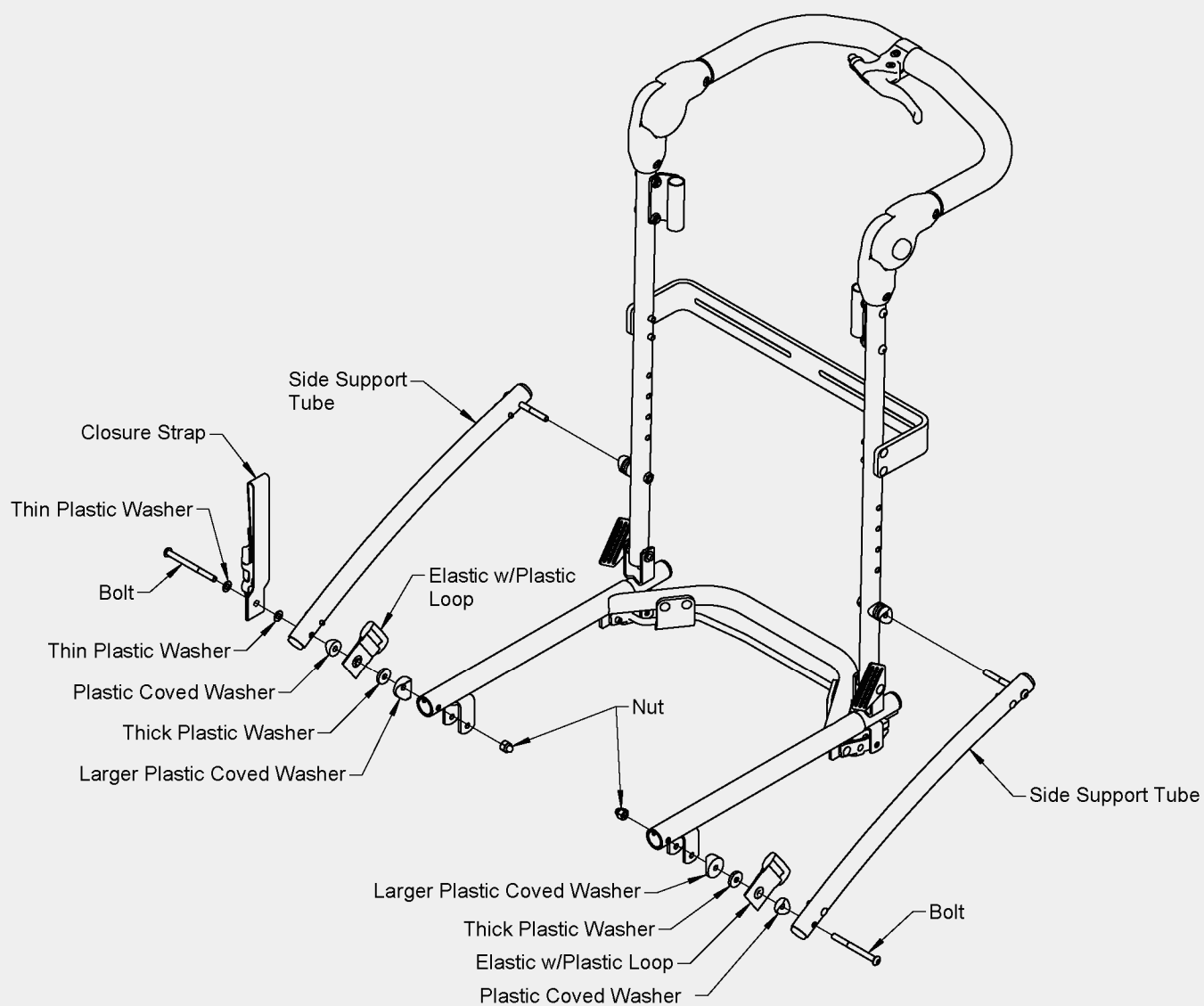
Step 4a

Adjust seat depth to desired position, reinsert bolt.



Step 4b

Repeat steps 2, 3a, 3b, 4a and 4b for opposite and Velcro seat support to mesh seat support.



If you have any questions concerning the Rodeo Seat Depth Adjustment, please call our Inside Sales Department at (888) 266-8243 or (310) 618-0111.